

# SM\_WS1R



HANDSET & TABLET

## GRADING CRITERIA

Sep 2024



# Grading for Our Supplier Direct Warehouse SM\_WS1R (Supplier 1)

**Devices are thoroughly inspected and receive a grade based on cosmetic condition and functionality. Here is a full breakdown of grades with example images. All devices have the OEM locks disabled and have been data cleared.**

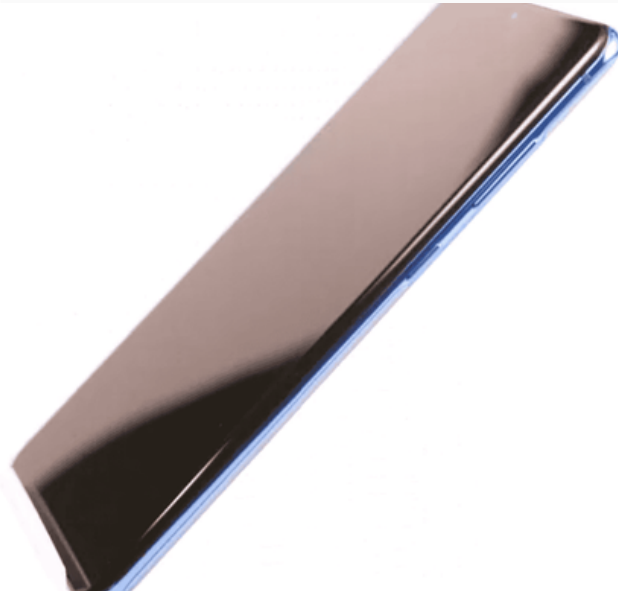
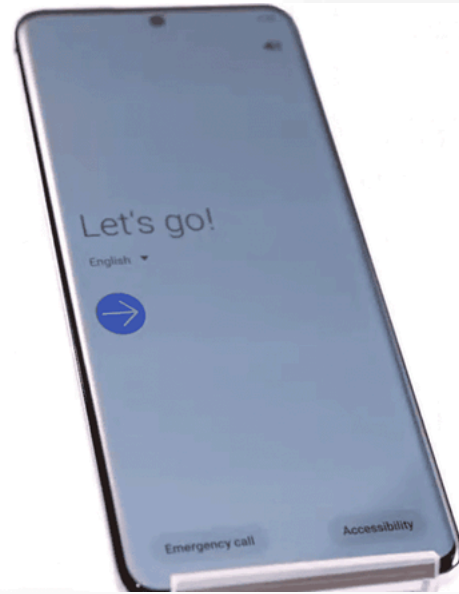
**See Supplier Direct Warehouse S1 Functional Testing below to learn what tests are run to determine the grades.**



# S1-LN+

**Like New, Fully Functional Devices: These devices, often returned by consumers within 14 days of purchase due to buyer's remorse, are in like-new condition.**

# S1-LN+

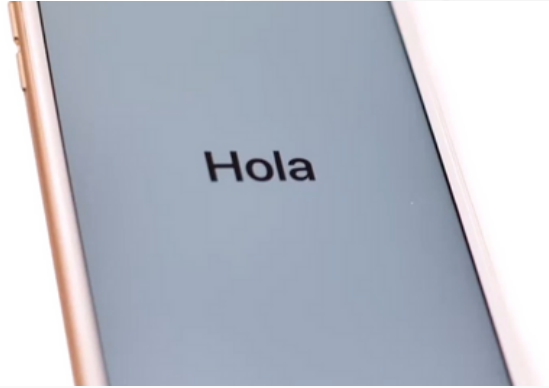




# S1-A+

**Gently Used, Fully Operational Devices: These devices have successfully passed all functional tests from the supplier and might display minimal cosmetic imperfections.**

# S1-A+



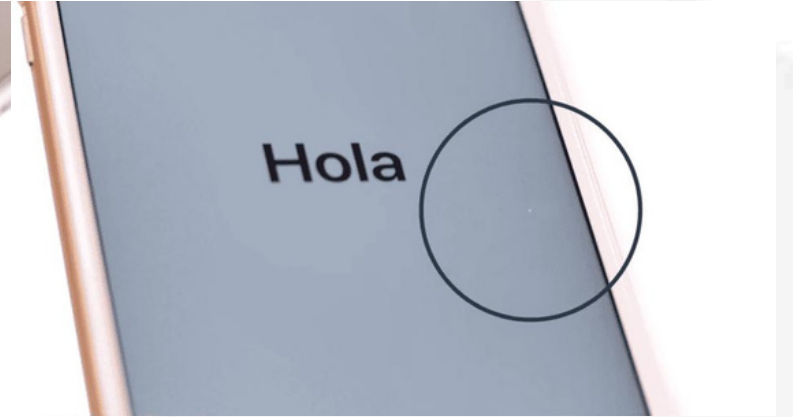


**S1-A**

**May also be sold as S1-A-**

**Gently Used Partially Operational Devices: These devices are operational but did not pass all functional tests and may have minor cosmetic imperfections.**

**S1-A**  
May also be sold as S1-A-





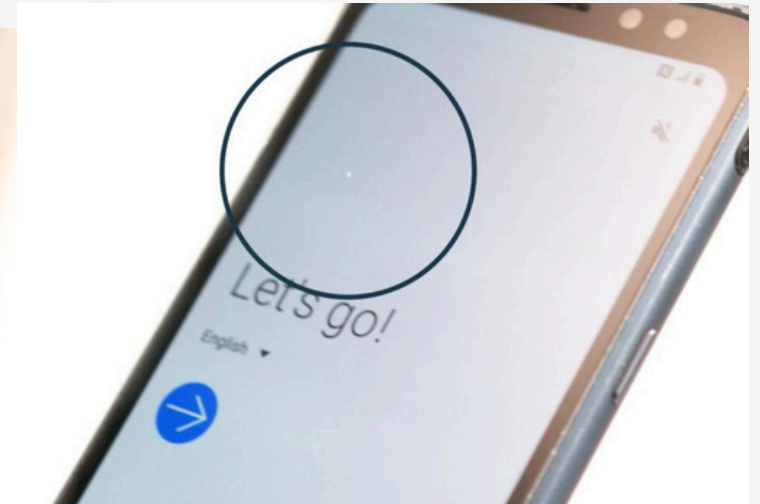


# S1-B+

**Moderate Wear & Tear, Fully Operational Devices: These devices have successfully passed all functional tests from the supplier, but will show more prominent cosmetic blemishes.**

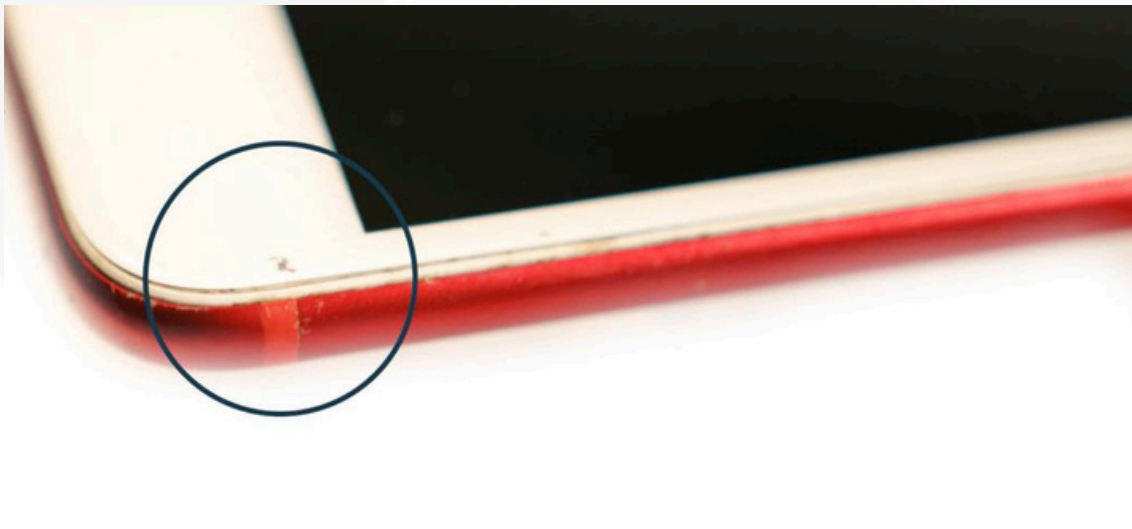
# S1-B+

صفحة رقم 1 من 2



# S1-B+

صفحة رقم 2 من 2





**S1-B**

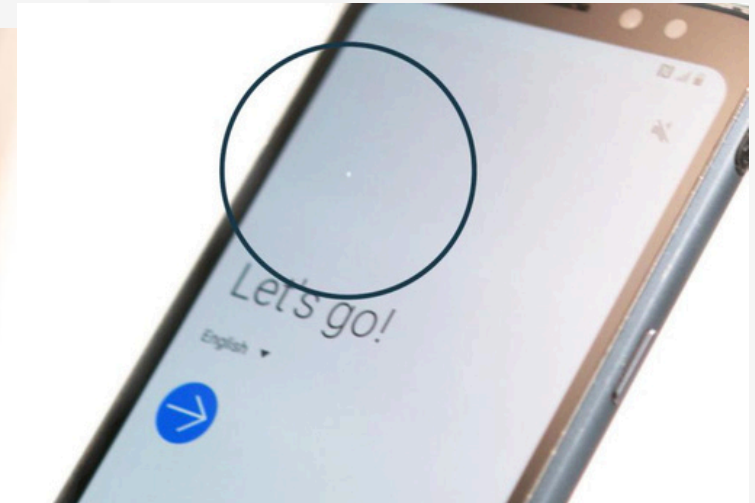
**May also be sold as S1-B-**

**Moderate Wear & Tear, Partially Operational Devices: These devices are functional but failed to pass all tests and will display more pronounced cosmetic imperfections.**

**S1-B**

صفحة رقم 1 من 2

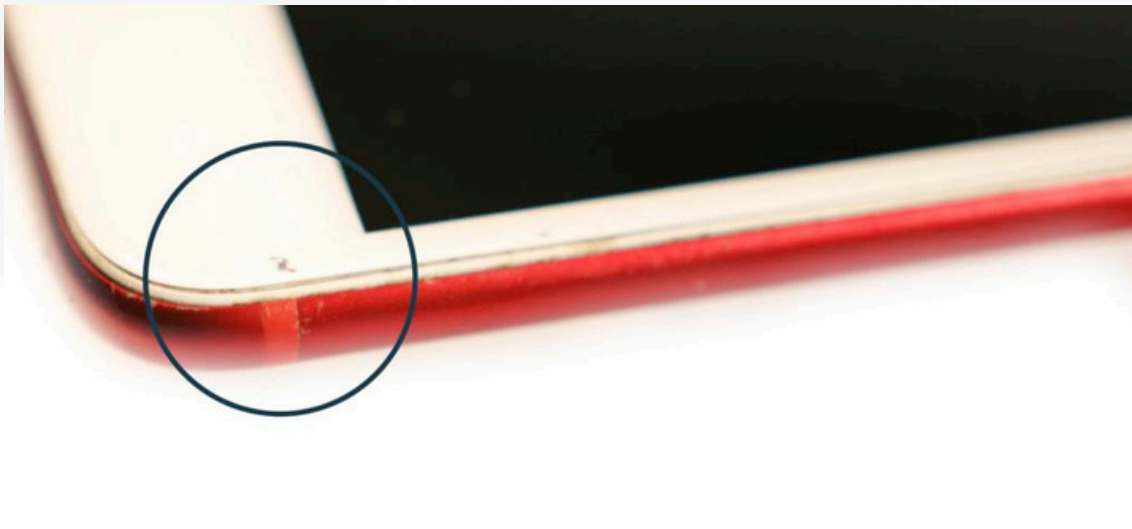
**May also be sold as S1-B-**



S1-B

صفحة رقم 2 من 2

May also be sold as S1-B-





**S1-C**

**May also be sold as S1-C+ or S1-C-**

**Significant Cosmetic Damage, Tested For Key Functions Only: These devices may show damage on all surfaces and have substantial screen issues. Only essential functions have been tested.**

## S1-C

May also be sold as S1-C+ or S1-C-







# Supplier Direct Testing for Mobile Devices and Tablets

**This chart outlines the minimum thresholds needed to be met for each grade.**

**Note: For tests that indicate “-” we are not guaranteeing the functionality, nor that the test was performed.**

## Supplier Direct Testing for Mobile Devices and Tablets

This chart outlines the minimum thresholds needed to be met for each grade.

Note: For tests that indicate "-", we are not guaranteeing the functionality, nor that the test was performed.

Grade Test	S1-LN+	S1-A+	S1-A	S1-B+	S1-B	S1-C
	Like New, Fully Functional	Gently Used, Fully Operational	Gently Used, Partially Operational	Moderate Wear & Tear, Fully Operational	Moderate Wear & Tear, Partially Operational	Significant Cosmetic Damage, Tested For Key Functions Only
Data Cleared	Y	Y	Y	Y	Y	Y
All Activation Locks are Disabled	Y	Y	Y	Y	Y	Y
Powers ON/OFF	Y	Y	Y	Y	Y	Y
Establishes Network Connection	Y	Y	Y	Y	Y	Y
Device Charges	Y	Y	Y	Y	Y	Y
Digitizer Function	Y	Y	Y	Y	Y	-
LCD Function	Y	Y	Y	Y	Y	-
Less than 3 Missing Pixels	Y	Y	Y	Y	Y	-
Wi-Fi Connectivity	Y	Y	Y	Y	-	-
Rear Picture / Camera / Video Operational	Y	Y	Y	Y	-	-
Speaker and Microphone Function	Y	Y	Y	Y	-	-
Exterior Buttons Function (Home, Volume, Mute, Power, Etc.) Operational	Y	Y	Y	Y	-	-
No Nav Bar / Menu Burn-In	Y	Y	Y	Y	-	-
No Bruising nor Burn-in Present	Y	Y	Y	Y	-	-
No Chips nor Delamination Present on Main Display Area or Screen Borders	Y	Y	Y	-	-	-
Backlight Function	Y	Y	-	Y	-	-
Proximity Sensor Function	Y	Y	-	Y	-	-
Vibrator Function	Y	Y	-	Y	-	-
Headset Jack Function	Y	Y	-	Y	-	-
Bluetooth Function	Y	Y	-	Y	-	-
GPS Function	Y	Y	-	Y	-	-
LDI Function	Y	Y	-	Y	-	-
Front Picture / Camera / Video Operational	Y	Y	-	Y	-	-
Fingerprint/Facial Recognition Function	Y	Y	-	Y	-	-
Battery Health (70%+)	Y	Y	-	-	-	-
14-Day Buyers Remorse	Y	-	-	-	-	-